

BK 9k P 11935

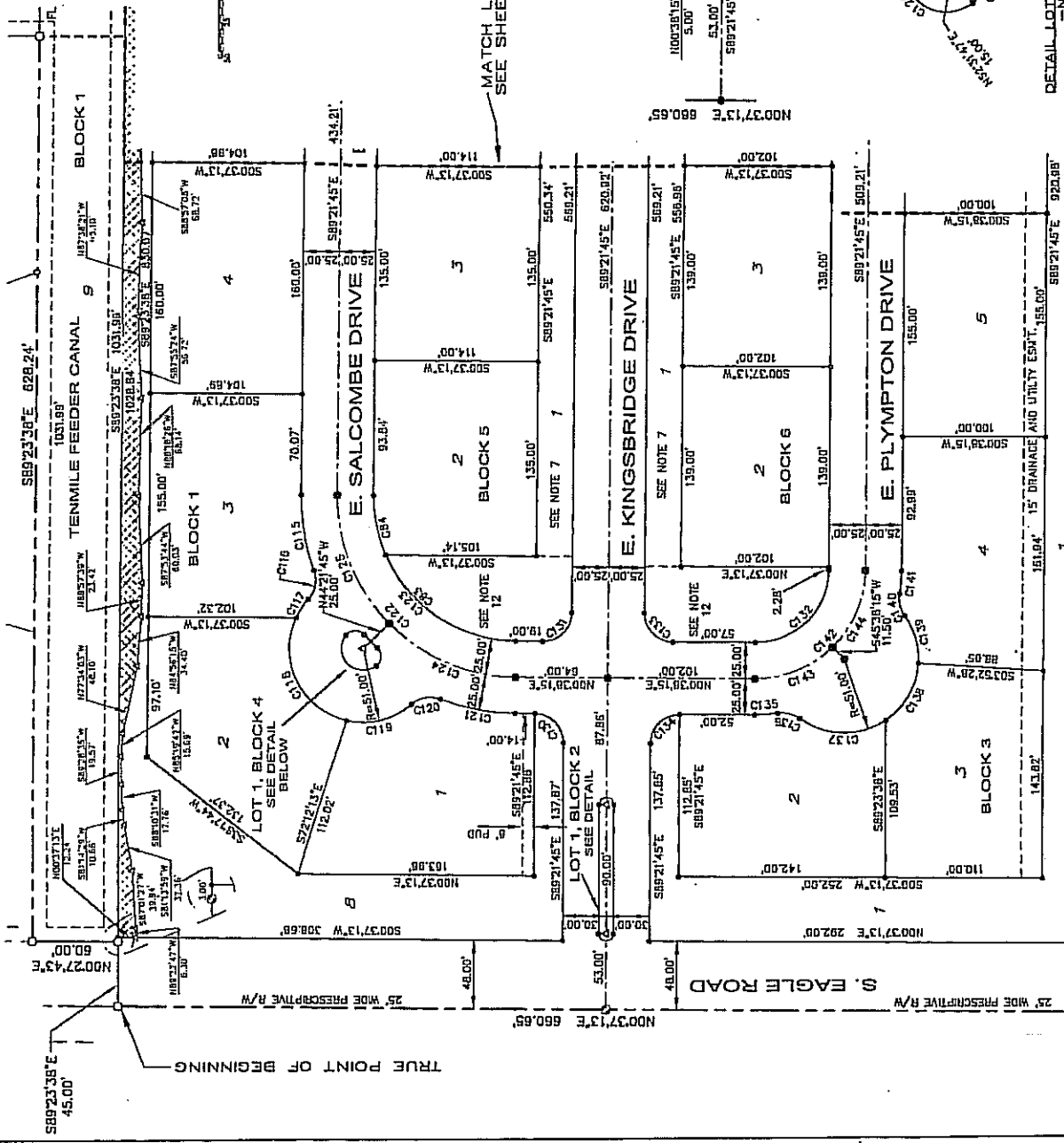
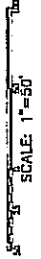
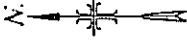
INITIAL PLAT SHOWING

KINGSBRIDGE SUBDIVISION PHASE 1

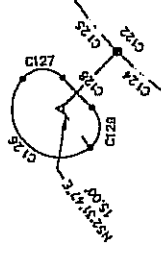
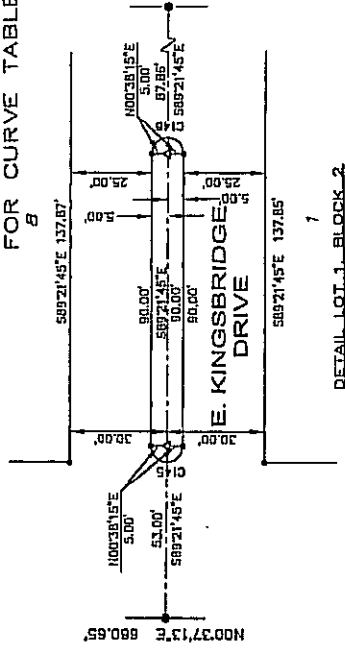
A PORTION OF LOT 11, BLOCK 2 OF THE DARTMOOR SUBDIVISION WITHIN A PORTION OF THE SOUTH 1/2 OF THE NORTHWEST 1/4, AND THE NORTH 1/2 OF THE NORTHWEST 1/4 OF THE SW 1/4, SECTION 28, T.3N., R.1E., B.M., CITY OF MERIDIAN, ADA COUNTY, IDAHO 2006

FOX LAND SURVEYS, INC.

- LEGEND**
- SUBDIVISION BOUNDARY LINE
 - LOT LINE
 - CENTER LINE
 - TIE LINE
 - 25' BUILDING SETBACK (SEE NOTE 3 SHEET 1)
 - PUD (PUBLIC UTILITY AND DRAINAGE EASEMENT LINE) UNLESS LABELED OTHERWISE
 - SET 5/8" REBAR WITH PLASTIC CAP STAMPED "FLS" PLUS 7812"
 - SET 1/2" REBAR WITH PLASTIC CAP STAMPED "FLS" PLUS 7812"
 - FOUND 5/8" REBAR WITH NO CAP UNLESS NOTED OTHERWISE
 - FOUND 1/2" REBAR WITH NO CAP UNLESS NOTED OTHERWISE
 - AREA CALCULATED POINT, NOTHING FOUND ON SET
 - FOUND 5/8" REBAR WITH PLASTIC CAP STAMPED "FLS" PLUS 7812" TO BE SET WITHIN ONE YEAR FROM THE RECORDING OF THIS PLAT
 - FOUND 1/2" REBAR WITH PLASTIC CAP STAMPED "FLS" PLUS 7812" TO BE SET WITHIN ONE YEAR FROM THE RECORDING OF THIS PLAT
 - WC WITNESS CORNER
 - BRIGADITION EASEMENT FOR THE BENEFIT OF THE BOISE PROJECT BOARD OF CONTROL



NOTE: SEE SHEET 7 FOR CURVE TABLE



PREPARED BY

FOX LAND SURVEYS, INC.

4696 OVERLAND ROAD SUITE 162 BOISE, ID 83705
208-342-7957 - FAX 208-342-7437

DETAIL LOT 1, BLOCK 4

DETAIL LOT 1, BLOCK 2

INDEX# 311-28-4-0-0-64-6539

INDEX# 311-28-3-4-0-64-6539

ACAD DWG. FILE 408FP

SHEET 5 OF 9

Bk 96 Pg 11934

INITIAL PLAT SHOWING

KINGSBRIDGE SUBDIVISION PHASE 1

A PORTION OF LOT 11, BLOCK 2 OF THE DARTMOUTH SUBDIVISION WITHIN A PORTION OF THE SOUTH 1/2 OF THE NORTHWEST 1/4, AND THE NORTH 1/2 OF THE NORTHWEST 1/4 OF THE SW 1/4, SECTION 28, T.3N., R.1E., B.M., CITY OF MERIDIAN, ADA COUNTY, IDAHO

2006
FOX LAND SURVEYS, INC.



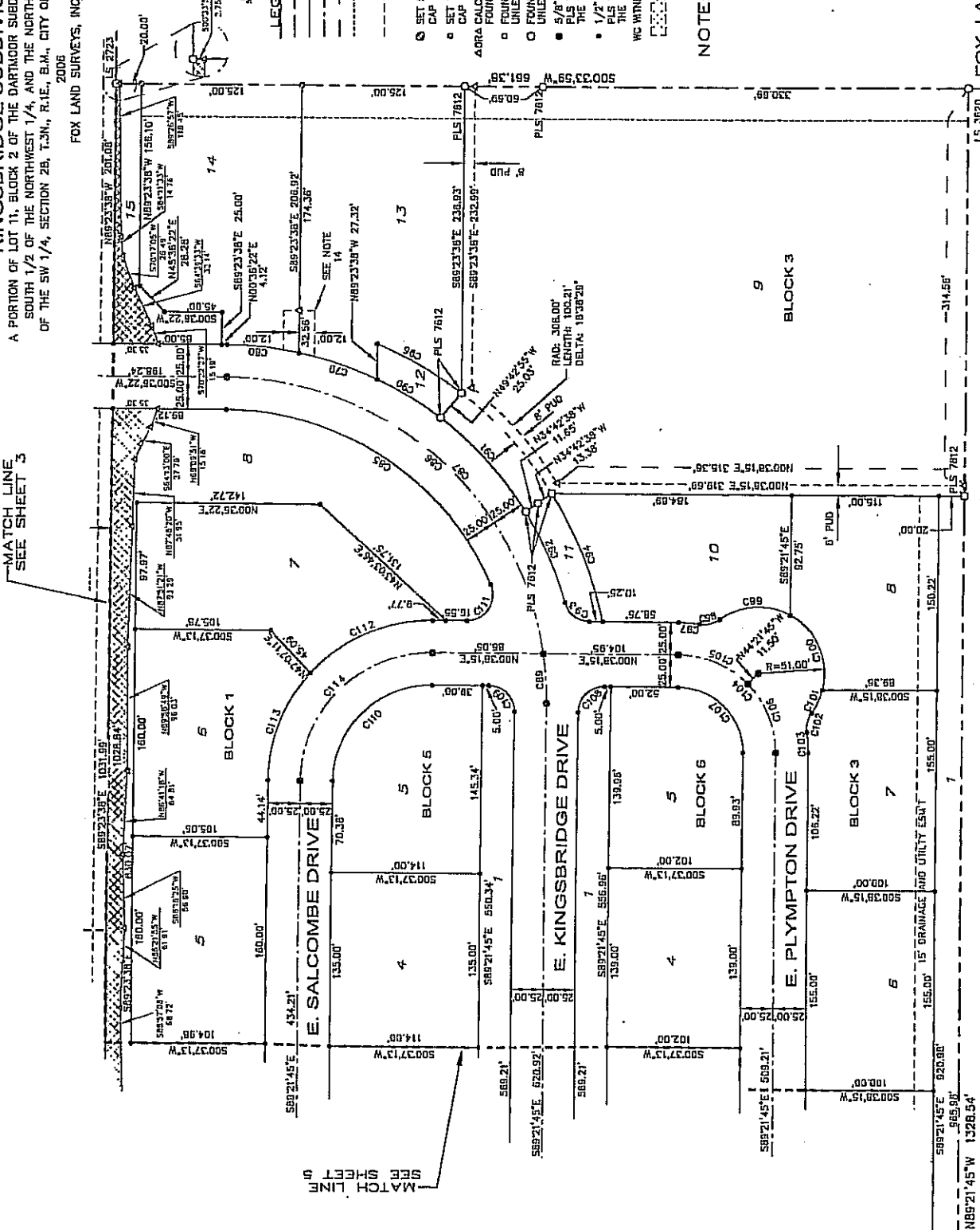
- LEGEND**
- SUBDIVISION BOUNDARY LINE
 - LOT LINE
 - CENTER LINE
 - THE LINE
 - 25' BUILDING SETBACK (SEE NOTE 3 SHEET 1)
 - PUD (PUBLIC UTILITY AND DRAINAGE EASEMENT LINE) UNLESS LABELED OTHERWISE
 - SET 5/8" REBAR WITH PLASTIC CAP STAMPED "FLS" PLS 7812
 - SET 1/2" REBAR WITH PLASTIC CAP STAMPED "FLS" PLS 7812
 - FOUND 1/2" REBAR WITH NO CAP UNLESS NOTED OTHERWISE
 - FOUND 5/8" REBAR WITH NO CAP UNLESS NOTED OTHERWISE
 - FOUND 1/2" REBAR WITH PLASTIC CAP STAMPED "FLS" PLS 7812 TO BE SET WITHIN ONE YEAR FROM THE RECORDING OF THIS PLAT
 - FOUND 5/8" REBAR WITH PLASTIC CAP STAMPED "FLS" PLS 7812 TO BE SET WITHIN ONE YEAR FROM THE RECORDING OF THIS PLAT
 - WC WITNESS CORNER
 - IRRIGATION EASEMENT FOR THE BENEFIT OF THE PROJECT BOARD OF CONTROL

NOTE: SEE SHEET 7 FOR CURVE TABLE



PREPARED BY
FOX LAND SURVEYS, INC.
4696 OVERLAND ROAD SUITE 162 BOISE ID 83705
208-342-7557 - FAX 208-342-7437

ACAD DWG. FILE 406FFP SHEET 4 OF 9



INDEX# 311-28-4-0-0-64-6539
INDEX# 311-28-3-4-0-64-6539

Bk 96 Pg 11933

INITIAL PLAT SHOWING

KINGSBRIDGE SUBDIVISION PHASE 1

A PORTION OF LOT 11, BLOCK 2 OF THE DARTMOOR SUBDIVISION WITHIN A PORTION OF THE SOUTH 1/2 OF THE NORTHWEST 1/4, AND THE NORTH 1/2 OF THE NORTHWEST 1/4 OF THE SW 1/4, SECTION 28, T.3N., R.1E., B.M., CITY OF MERIDIAN, ADA COUNTY, IDAHO

2006
FOX LAND SURVEYS, INC.



SCALE: 1"=50'

NOTE: SEE SHEET 7 FOR CURVE TABLE

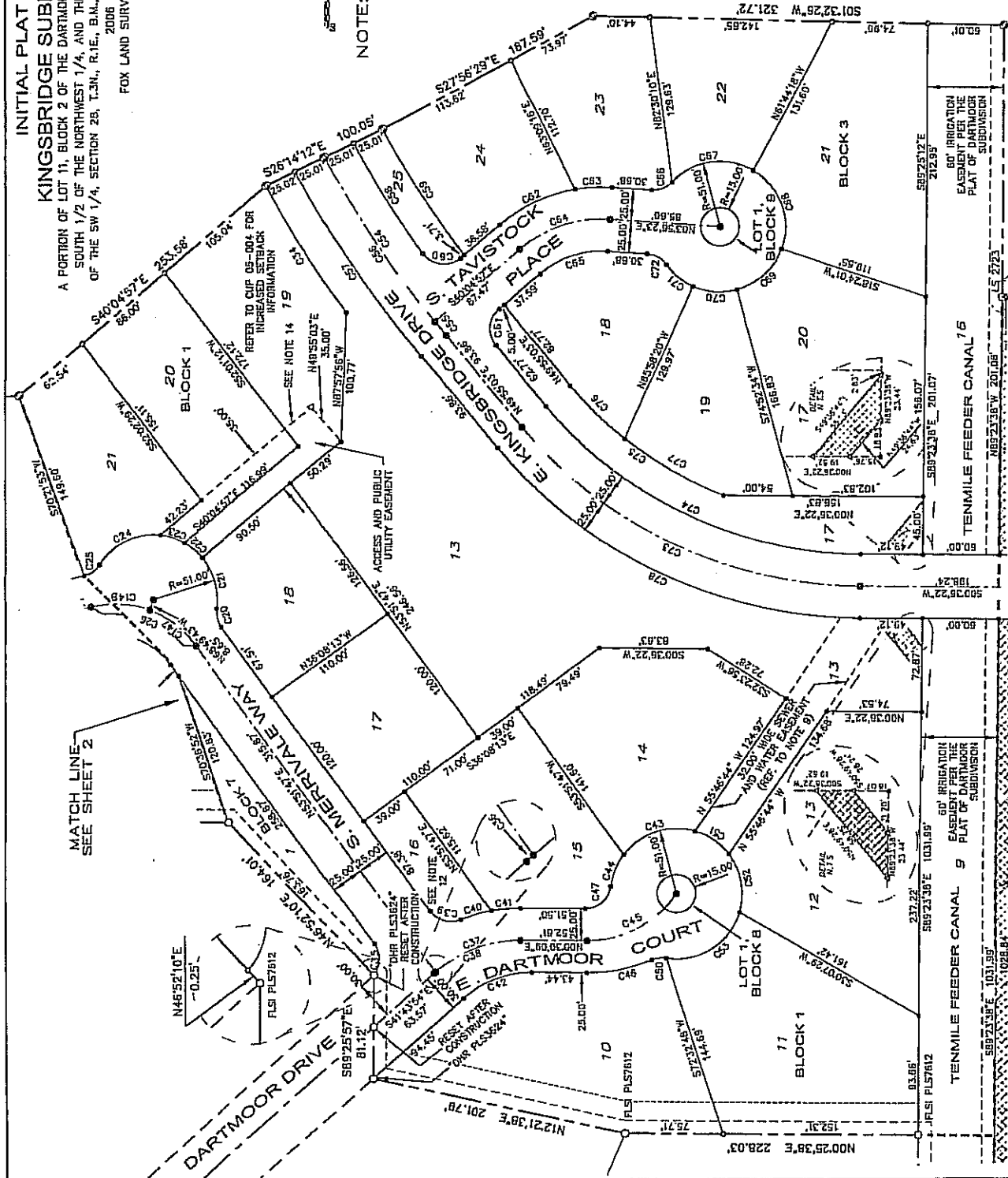
LEGEND

- SUBDIVISION BOUNDARY LINE
- LOT LINE
- CENTER LINE
- TIE LINE
- 25' BUILDING SETBACK (SEE NOTE 3 SHEET 1)
- PUD (PUBLIC UTILITY AND DRAINAGE EASEMENT LINE) UNLESS LABELLED OTHERWISE
- SET 5/8" REBAR WITH PLASTIC CAP STAMPED "FLS PLS 7612"
- SET 1/2" REBAR WITH PLASTIC CAP STAMPED "FLS PLS 7612"
- FOUND 1/2" REBAR WITH NO CAP UNLESS NOTED OTHERWISE
- FOUND 5/8" REBAR WITH NO CAP UNLESS NOTED OTHERWISE
- 5/8" REBAR WITH PLASTIC CAP STAMPED "FLS PLS 7612" TO BE SET WITHIN ONE YEAR FROM THE RECORDING OF THIS PLAT
- 1/2" REBAR WITH PLASTIC CAP STAMPED "FLS PLS 7612" TO BE SET WITHIN ONE YEAR FROM THE RECORDING OF THIS PLAT
- WC WITNESS CORNER
- IRRIGATION EASEMENT PER THE BERTCH OF THE HOUSE PROJECT BOARD OF CONTROL



PREPARED BY
FOX LAND SURVEYS, INC.
4696 OVERLAND ROAD SUITE 162 BOISE ID 83705
208-342-7957 - FAX 208-342-7437

SHEET 3 OF 9



INDEX# 311-28-4-0-0-64-6539
INDEX# 311-28-3-4-0-64-6539

ACAD DWG. FILE 406FP

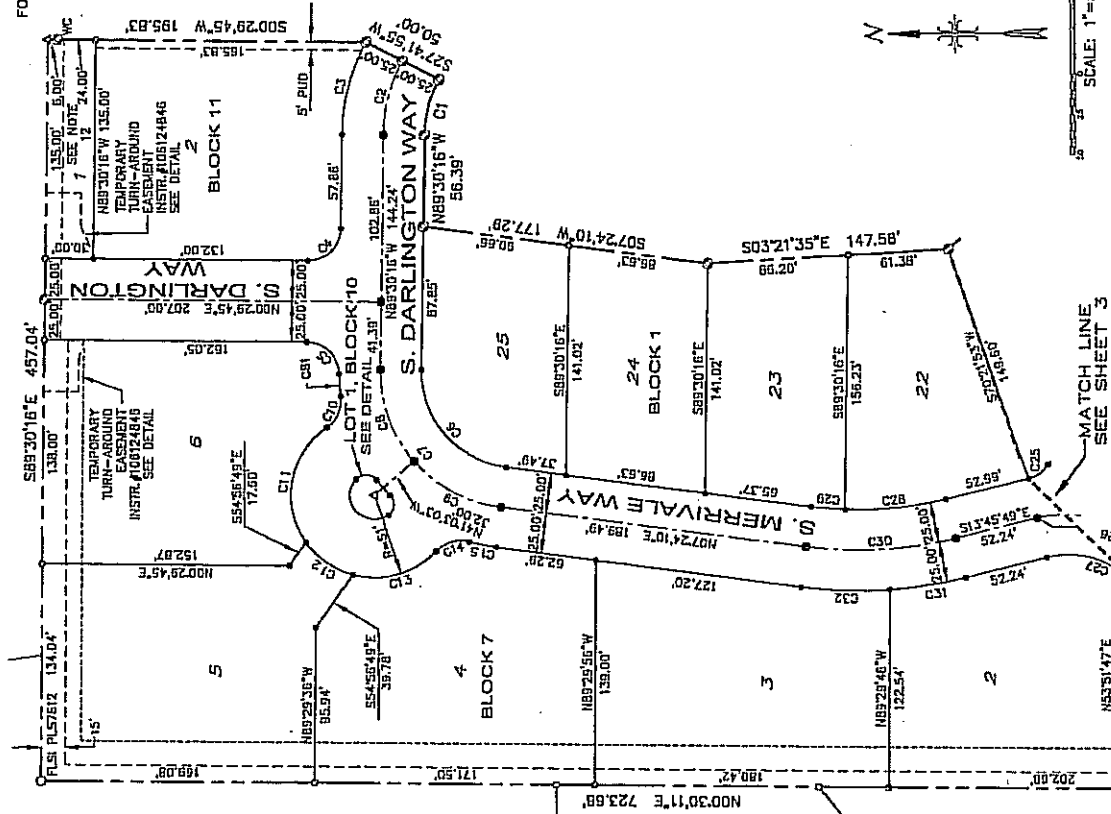
B.K. 94 Pg. 11932

INITIAL PLAT SHOWING

KINGSBRIDGE SUBDIVISION PHASE 1

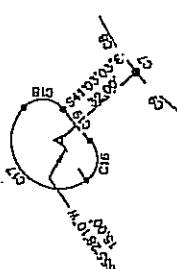
A PORTION OF LOT 11, BLOCK 2 OF THE DARTMOUTH SUBDIVISION WITHIN A PORTION OF THE SOUTH 1/2 OF THE NORTHWEST 1/4, AND THE NORTH 1/2 OF THE NORTHWEST 1/4 OF THE SW 1/4, SECTION 28, T.34N., R.1E., B.M., CITY OF MERIDIAN, ADA COUNTY, IDAHO

2006
FOX LAND SURVEYS, INC.

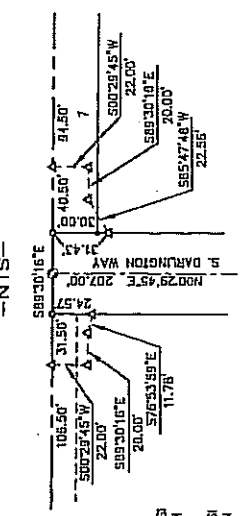


CURVE	RADIUS	DELTA	LENGTH	TANGENT	CHORD BEARING	CHORD DISTANCE
C1	75.00	271211°	35.61	18.15	N75°54'11"W	35.28
C2	100.00	271211°	47.48	24.20	N75°54'11"W	47.03
C3	125.00	271211°	59.35	30.24	N75°54'11"W	58.78
C4	20.00	807001°	31.42	20.00	S44°20'18"E	20.28
C5	20.00	872424°	30.86	18.45	N44°41'57"E	27.89
C6	60.00	8370534°	87.01	53.17	N48°55'57"E	79.59
C7	65.00	8370534°	123.26	75.32	S48°55'57"W	112.75
C8	65.00	41°32'47"	61.84	32.24	S89°43'21"W	60.28
C9	65.00	41°32'47"	61.84	32.24	S89°10'34"W	60.28
C10	20.00	03°27'50"	22.15	12.30	N88°27'02"W	21.03
C11	51.00	8008107°	80.25	51.14	N28°48'10"W	72.22
C12	51.00	4008107°	35.73	18.63	S55°03'41"W	35.00
C13	51.00	87°21'35"	55.54	30.86	S16°11'42"E	52.81
C14	20.00	83°26'51"	22.19	12.36	N15°30'04"W	21.03
C15	110.00	84°01'27"	16.65	8.34	S11°41'51"W	16.83
C16	8.00	07°53'57"	13.05	6.82	N84°28'40"W	12.25
C17	15.00	08°33'57"	43.71	13.14	N83°55'57"E	29.81
C18	6.00	93°33'57"	13.05	6.82	S82°22'43"W	12.25
C19	10.00	84°33'57"	12.87	6.49	S88°58'57"W	12.87
C20	20.00	43°53'45"	15.34	8.06	S75°48'30"W	14.95
C21	51.00	47°56'12"	42.67	22.67	N73°47'25"E	41.44
C22	51.00	20°40'28"	18.40	9.30	N38°28'08"E	18.30
C23	51.00	22°41'53"	20.20	10.24	N17°47'55"E	20.07
C24	51.00	65°41'15"	56.69	31.87	N25°23'37"W	53.82
C25	20.00	43°28'24"	15.10	7.87	S35°30'01"E	14.81
C26	80.00	87°37'35"	94.42	53.59	N80°02'59"E	89.04

SEE SHEET 7 FOR THE CONTINUATION OF THE CURVE TABLE



DETAIL LOT 1, BLOCK 10



EASEMENT DETAIL

-NTS-(SEE NOTE 16)

LEGEND

- SUBDIVISION BOUNDARY LINE
- LOT LINE
- CENTER LINE
- TIE LINE
- 2" BUILDING SETBACK (SEE NOTE 3 SHEET 1)
- R/O (RADIUS UTILITY AND DRAINAGE EASEMENT LINE) UNLESS LABELED OTHERWISE
- SET 5/8" REBAR WITH PLASTIC CAP STAMPED "FLS PLS 7012"
- SET 1/2" REBAR WITH PLASTIC CAP STAMPED "FLS PLS 7612"
- AREA CALCULATED POINT, NOTHING FOUND OR SET
- FOUND 1/2" REBAR WITH NO CAP UNLESS NOTED OTHERWISE
- FOUND 5/8" REBAR WITH NO CAP UNLESS NOTED OTHERWISE
- 5/8" REBAR WITH PLASTIC CAP STAMPED "FLS PLS 7012" TO BE SET WITHIN ONE YEAR FROM THE RECORDING OF THIS PLAT
- 1/2" REBAR WITH PLASTIC CAP STAMPED "FLS PLS 7612" TO BE SET WITHIN ONE YEAR FROM THE RECORDING OF THIS PLAT
- WC WITNESS CORNER
- IRRIGATION EASEMENT FOR THE BENEFIT OF THE BOISE PROJECT BOARD OF CONTROL



PREPARED BY
FOX LAND SURVEYS, INC.
4896 OVERLAND ROAD SUITE 162 BOISE ID 83705
208-342-7957 - FAX 208-342-7437

INDEX# 311-28-4-0-0-64-6539
INDEX# 311-28-3-4-0-64-6539

ACAD DWG. FILE 408FP

SHEET 2 OF 9

